



SPECIFICATION FOR H.V.T	PART NUMBER	CUSTOMER
DPES - H - E - 05334	YR-E1100A	

1. SCOPE

THIS SPECIFICATION APPLIES TO TRANSFORMER PART NO. YR-E1100A  
FOR USING IN MICROWAVE OVEN

2. APPLICABLE SAFETY STANDARD : IEC.PUB 335-2-25 & 331-1 CLASS 1

3. APPEARANCE AND CONSTRUCTION.

3.1 APPEARANCE : TRANSFORMER SHALL BE FREE FROM SUCH DEFICIENCIES AS DEFORMATION, CRACK OR RUST IN APPEARANCE.

3.2 TYPE, DIMENSION AND MARKING : SEE ATTACHED CONSTRUCTION DRAWING NUMBER PRJ-05334

3.3 CLASSIFICATION OF TERMINAL : #250 FASTON TABS & RECEPTACLES.

4. MECHANICAL PERFORMANCE.

4.1 COMPRESSED STRENGTH OF TERMINALS : TERMINALS SHALL BE WITHSTAND WITHOUT BREAKING OR LOOSENING WHEN A STATIC LOAD OF 100N FOR 15 SECONDS IS APPLIED IN THE DIRECTION OF PULLING OUT TO THE TERMINAL.

5. ELECTRICAL PERFORMANCE

5.1 RATED PRIMARY VOLTAGE : AC 230 V

5.2 RATED FREQUENCY : 50 Hz

5.3 SECONDARY VOLTAGE. (CHECK RESULT BASED ON 230V)

CODE	NO-LOAD VOLTAGE (R. M S)	DEVIATION
HIGH VOLTAGE(S1)	AC 2380 V	± 20 V
FILAMENT VOLTAGE(S2)	AC 3.32 V	± 0.1 V

5.4 NO-LOAD CURRENT : NO-LOAD CURRENT SHALL BE LESS THAN 8 A  
AT 50 Hz, AC 230 V SUPPLY.

5.5 NO-LOAD WATTAGE LOSS : NO-LOAD WATTAGE LOSS SHALL BE LESS THAN 90 W  
AT 50 Hz, AC 230 V SUPPLY.

5.6 DIELECTRIC STRENGTH AND INDUCED VOLTAGE TEST : TRANSFORMER SHALL BE WITHSTAND AS FOLLOWING STATEMENT.

ITEM APPLIED POINT	STANDARD	MASS PRODUCTION
	APPLIED VOLTAGE(RMS)AND TIME	APPLIED VOLTAGE(RMS)AND TIME
PRIMARY WINDING - CORE	50 Hz, AC 1500 V, 1 MINUTE	50 Hz, AC 2000 V, 3 SECONDS
FILAMENT WINDING - CORE	50 Hz, AC 10000 V, 1 MINUTE	50 Hz, AC 10500 V, 3 SECONDS
FILAMENT WINDING - PRIMARY WINDING	50 Hz, AC 10000 V, 1 MINUTE	50 Hz, AC 10500 V, 3 SECONDS
INDUCED VOLTAGE - TEST	400 Hz, AC 690 V, 60SECONDS	400 Hz, AC 690 V, 3 SECONDS

5.7 INSULATION RESISTANCE : INSULATION RESISTANCE BETWEEN EACH WINDING, AND CORE, EXCEPT SECONDARY WINDING AND CORE, SHALL BE MORE THAN 100 MΩ MEASURED WITH DC 500V INSULATION RESISTANCE TESTER BEFORE LOADING.

5.8 D.C.RESISTANCE AT 20 °C

(1) PRIMARY : 1.400 +5% Ω

(2) SECONDARY : 110.0 +5% Ω

6. ENVIRONMENTAL PERFORMANCE.

6.1 HEAT RESISTANCE : IMMEDIATELY AFTER BEING PLACED IN A ROOM FOR 48 HOURS MAINTAINED AT 220°C AMBIENT TEMPERATURE, TRANSFORMER SHALL CONFORM WITH THE ABOVE PARAGRAPH 5-6 AND ALSO INSULATION RESISTANCE SHALL BE MORE THAN 10 MΩ.

6.2 MOISTURE RESISTANCE : IMMEDIATELY AFTER BEING PLACED IN A ROOM FOR 96 HOURS IN SUCH CONDITION THAT IS MAINTAINED AT 90 - 95% RELATIVE HUMIDITY AND 40 ± 2°C TEMPERATURE, AND WIPED A DROP OF WATER, TRANSFORMER SHALL BE CONFORM WITH THE ABOVE PARAGRAPH 5-6 AND ALSO INSULATION RESISTANCE SHALL BE MORE THAN 10 MΩ.

7. INSPECTION.

7.1 100% INSPECTION ITEMS : NO - LOAD CURRENT, NO - LOAD WATTAGE LOSS, SECONDARY OPEN VOLTAGE, ITEM 5-6 TEST, APPEARANCE AND CONSTRUCTION.

7.2 SAMPLING INSPECTION ITEMS : THE ITEMS OF THE SAMPLING INSPECTION SHALL BE COIL RESISTANCE, INSULATION RESISTANCE, DIMENSION AND AUDIBLE SOUND TEST, INCLUDING THE 100% INSPECTION ITEMS AS THE ABOVE PARAGRAPH 7-1.

7.3 THE SAMPLING INSPECTION DATA ACCORDING TO 7-2 AND 100% DIELECTRIC WITHSTAND TEST DATA SHALL BE SUBMITTED FOR EACH LOT. (N=5)

8. OTHERS.

8.1 AUDIBLE SOUND TEST : WHEN APPLIED THE RATED PRIMARY VOLTAGE, TRANSFORMER SHALL BE MAKE NO LOUDER SOUND THAN 50dB. AT THE DISTANCE OF 30cm FROM IT.

8.2 INSULATION CLASS : CLASS 250

8.3 MAGNETRON :

8.4 CONDENSER : uF

8.5 OUTPUT POWER : 1100 W

8.6 WEIGHT : 5.47 Kg

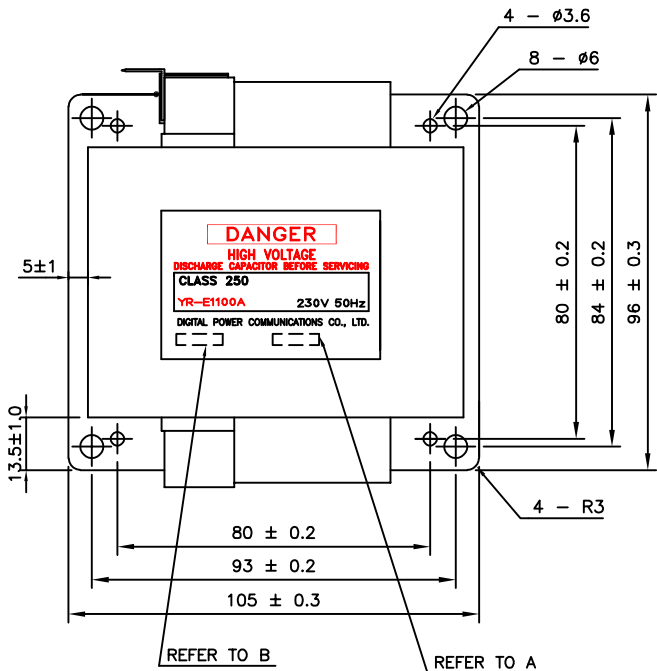
8.7 MANUFACTURER : DIGITAL POWER COMMUNICATIONS CO.,LTD.

145, SANDAN-RO 19BEON-GIL  
DANWON-GU, ANSAN-SHI, GYEONGGI-DO, 15609, KOREA

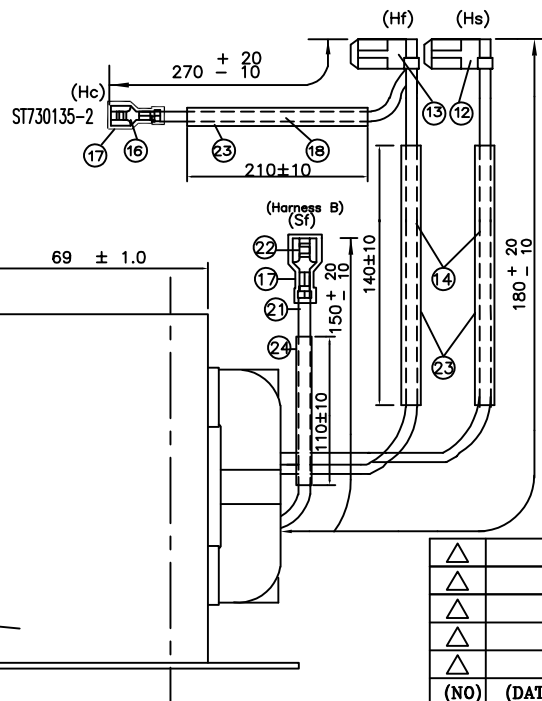
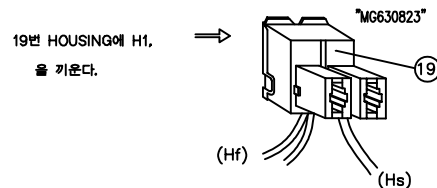
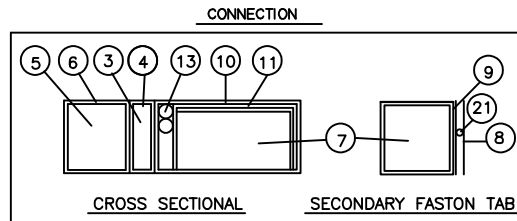
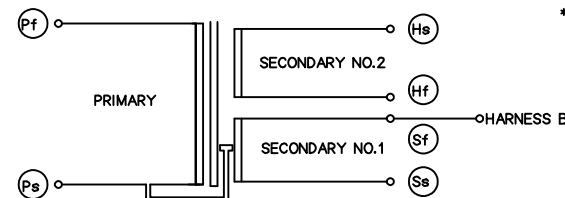
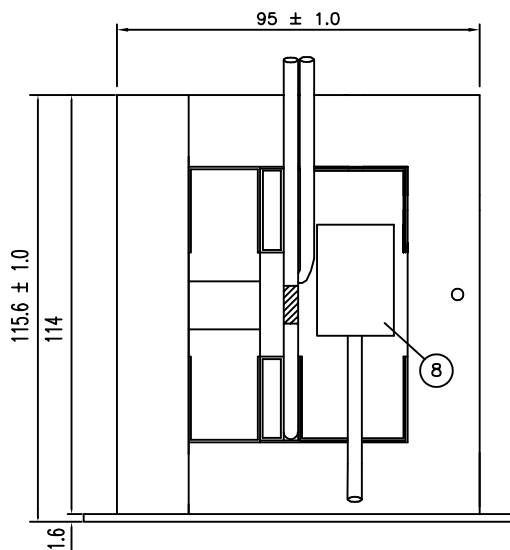
D Y POWER SYSTEMS(M) SDN BHD  
LOT 17245, 4TH MILE, JALAN GENTING OFF JALAN KAPAR,  
42100 RANTAU PANJANG, SELANGOR, MALAYSIA.

DPC NANTONG CO.,LTD.  
8 BINJIANG RD, HUIFENG TOWN, QIDONG CITY,  
JIANGSU 226264, CHINA

DPC FOSHAN CO.,LTD.  
NO 22 3RD RD, WEST D/C,  
GUANGHUA-BAIAN INDUSTRIAL PARK,  
XINGTAN SHUNDE FOSHAN GUANGDONG CHINA



BRACKET SPOT WELDING ON MAKED 5 POSITIONS



\* A - FOR PRODUCTION CONTROL

\* B - FOR PRODUCTION LOCATION

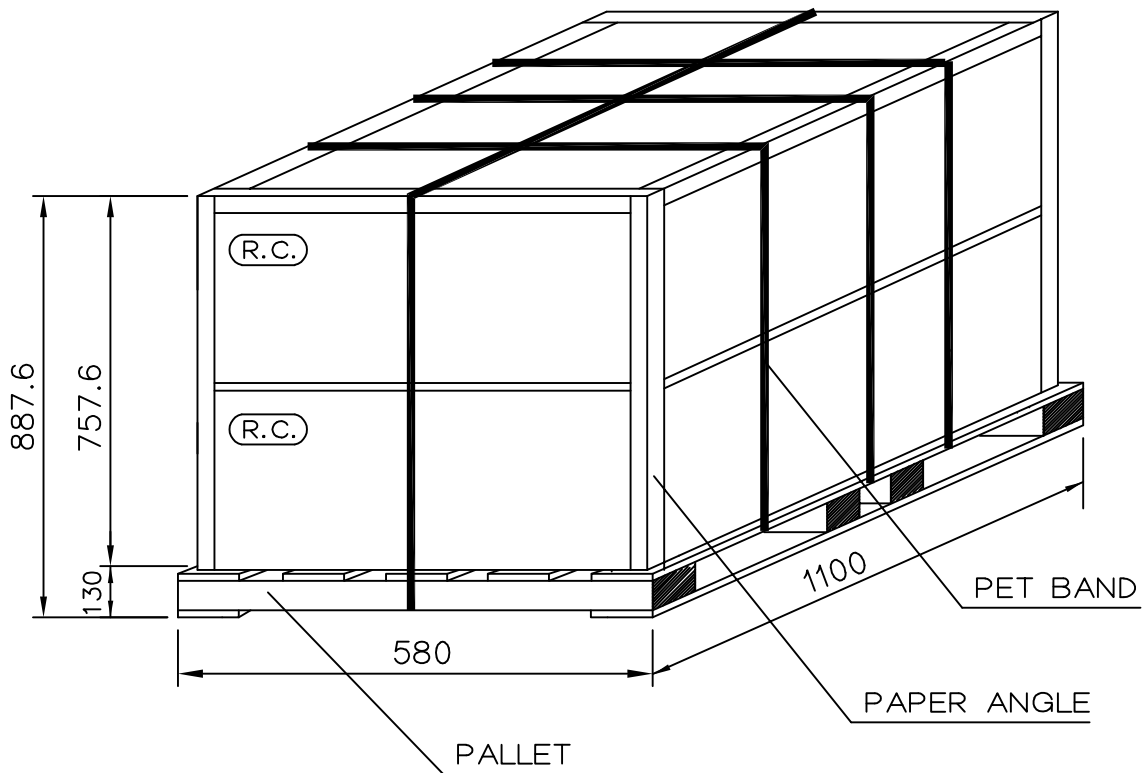
0 0 0 0 0 0  
YEAR MONTH DAY TIME/WORK LINE

D P C : KOREA  
DPC-M : MALAYSIA  
DPC-c : CHINA(DPC NANTONG CO.,LTD)  
DPC-S : CHINA(DPC FOSHAN CO.,LTD)

\*YEAR ; A : '2020 B : '2021 C : '2022

	VARNISH		UNSATURATED POLYESTER VARNISH "DVB-2152" NOROO PAINT & INK CO., LTD. "93947"
24	TUBE	1EA	F.S.Q.T 4.0 $\phi$ (RED)
23	TUBE	3EA	F.S.Q.T 4.0 $\phi$ (WHITE)
22	HARNES B TERMINAL	1EA	BRASS STRIP. FASTON TERMINAL #250 PART NO : S730135-3* KET OR TP25012K-2* ZUCH
21	HARNES B	1EA	SILICONE RUBBER WIRE (WHITE)
20	PROTECTOR	1EA	TYPE BM-1 175A OR 17AM242 (175°C)
19	HOUSING	1EA	POSITIVE LOCK HOUSING #250. PART NO: "MG630823". KET OR "85091-1" TYCO OR "HP25039K-2" ZUCH
18	HARNES C	1EA	SILICONE RUBBER WIRE (RED)
17	HEAT SHRINKABLE TUBE	2EA	HEAT SHRINKABLE TUBE 105°C 600V $\phi 6$ .
16	HARNES C TERMINAL	1EA	BRASS STRIP. FASTON TERMINAL #250 PART NO : S730135-3* KET OR TP25012K-2* ZUCH
15	PRIMARY FASTON TABS	2EA	EQUIVALENT TO AMP #250
14	SECONDARY NO.2 COIL	1EA	SILICONE RUBBER WIRE (RED)
13	SECONDARY NO.2 COIL TERMINAL	1EA	BRASS STRIP. POSITIVE LOCK TERMINAL #250 PART NO : "936605-1" TYCO OR "ST730575-3" KET OR "TF25032K-3" ZUCH
12	SECONDARY NO.2 COIL TERMINAL	1EA	BRASS STRIP. POSITIVE LOCK TERMINAL #250 PART NO : "936603-1" TYCO OR "ST730573-3" KET OR "TF25031K-3" ZUCH
11	SECONDARY NO.1 COIL INSULATOR	2EA	MICA 0.25/0.35mm THICK.
10	SECONDARY NO.1 COIL INSULATOR	2EA	ARAMID PAPER #410.NMN 0.17mm THICK. DUPONT.
9	SECONDARY NO.1 COIL END INSULATOR	2EA	ARAMID PAPER #411 0.25/0.38mm THICK. DUPONT.
8	HARNES B COVER	1EA	ARAMID PAPER #411 0.25/0.38mm THICK. DUPONT.
7	SECONDARY NO.1 COIL	1EA	MW35A POLYESTERIMIDE POLYAMIDEIMIDE COATING WIRE. POLYESTER POLYAMIDEIMIDE COATING WIRE
6	PRIMARY INSULATOR	2EA	ARAMID PAPER #410.NMN 0.17mm THICK. DUPONT
5	PRIMARY COIL	1EA	MW35A POLYESTERIMIDE POLYAMIDEIMIDE COATING WIRE. POLYESTER POLYAMIDEIMIDE COATING WIRE
4	PASS CORE INSULATOR	2EA	PRESS BOARD 0.18mm THICK. ABEGAWA DENKI CO ARAMID PAPER #411 0.25/0.38mm THICK. DUPONT.
3	PASS CORE	2EA	LAMINATED ELECTRICAL STEEL 0.5mm THICK.
2	MOUNTING BRACKET	1EA	STEEL 1.6 mm THICK.
1	CORE	1EA	LAMINATED ELECTRICAL STEEL 0.5mm THICK.
NO	MATERIAL	Q'TY	SPECIFICATION

△									名 (DESIGNATION)
△									H . V . T
△									(YR-E1100A)
△									稱
△									(DWG NO.)
(NO)	(DATE)	變更內容 (MODIFIED CONTENTS)							(PAGE)
捉度 (SCALE)	設計 (DATE)	2020.06.05	製圖 (DWG)	檢圖 (CHECK)	承認 (APPR.)				
	計 (DESIG)		製圖 (DWG)	檢圖 (CHECK)	承認 (APPR.)				
									番
									PRJ-05334



- . PRODUCT WEIGHT PER A PCS : ABOUT 5.47 KG
- . TOTAL PRODUCT WEIGHT PER A PALLET : 5.47 KG X 144 Pcs=ABOUT 787.68 KG
- . PACKING WEIGHT PER A PALLET : ABOUT 20 KG
- . TOTAL WEIGHT PER A PALLET : 787.68 KG+ 20 KG=ABOUT 807.68 KG
- . PRODUCT QUANTITY PER A PALLET :
  - 6 IN A ROW BY 4 COLUMN X 6 LAYER= 144 Pcs
- . PALLET QUANTITY ( 1100 x 580 ) X 20 = 20 Pcs
- . CONTAINER TOTAL WEIGHT IN 20'FT CONTAINER :
  - 807.68 KG X 20 Pcs= ABOUT 16,153.6 KG
- . TOTAL QUANTITY OF PRODUCTS IN 20'FT CONTAINER :
  - 144 Pcs X 20 Pcs = 2,880 Pcs

△									名 称 圖 番	(DESIGNATION)	
△										YR-E1100A	
△										(DWG NO.)	(PAGE)
△										ATDOC-05334	/
(NO)	(DATE)	變更內容 (MODIFIED CONTENTS)									
尺 度	(SCALE)	設 計	(DATE)	2020.06.05	製 圖	(DWG)	檢 圖	(CHECK)	承 認	(APPR.)	
	N/S		(DESIG)			<i>lhb</i>		<i>lhb</i>		<i>lhb</i>	